

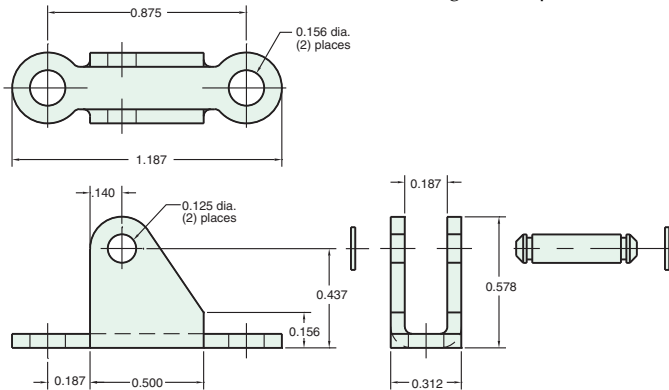


# 5/16" BORE ACCESSORIES



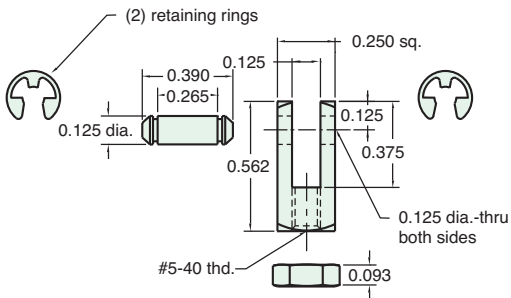
## CB-0595

Clevis Bracket  
Material: Steel, bright zinc plated



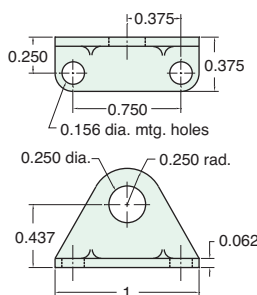
## RC-0581

Rod Clevis  
Material: Steel, electroless nickel plate



## FB-0591

Foot Bracket  
Material: Steel, bright zinc plated



## MOUNTING NUTS

### Stud Nut

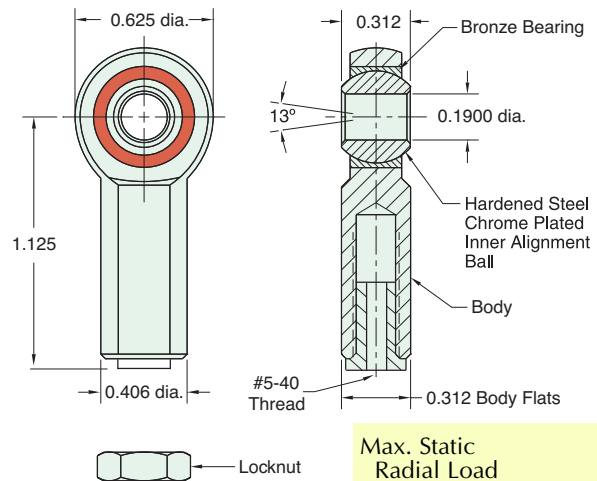
Part Number	Across Flats	Nut Thickness	Nut (Thread)
<b>N04-28A</b>	7/16"	5/32"	1/4-28
<b>N04-28B</b>	3/8"	1/8"	1/4-28
<b>N06-24A</b>	9/16"	7/32"	3/8-24
<b>N06-24B</b>	1/2"	3/32"	3/8-24

### Rod Nut

Part Number	Across Flats	Nut Thickness	Nut (Thread)
<b>N02-40</b>	1/4"	3/32"	#5-40

## RE-0585

Rod End  
Material: Steel, bright zinc plated body



Max. Static Radial Load (rod end only): 1,624 lbs.  
Fits Rod Thread Size: #5-40

## FB-0592

Foot Bracket  
Material: Steel, bright zinc plated

